



PROUDLY CELEBRATING 81 YEARS OF SISTERHOOD



# 63rd *Boulé*

*"One Sisterhood, Remembering Our Legacy...Building for the Future"*

*Lenor Reese, Supreme Basileus*

**JULY 30 – AUGUST 3, 2024**

**SHERATON BIRMINGHAM HOTEL**

2101 Richard Arrington Jr. Boulevard

Birmingham, Alabama 35203

TN: (205) 324-5000

**Gamma Phi Delta Sorority, Incorporated a Business and Professional Women's Sorority is a 501(c)(3) Organization.**

National Headquarters: 2657 West Grand Boulevard, Detroit, Michigan 48208-1203

Phone: (313) 873-2691 | E-mail: [gamma\\_phi\\_delta@gpd1943.org](mailto:gamma_phi_delta@gpd1943.org) | Website: [gpd1943.org](http://gpd1943.org)

*National Theme: "Uniquely Joined in Purpose, United in Service, Champions of Change"*



ESTABLISHED IN NINETEEN FORTY THREE





# Gamma Phi Delta Sorority, Incorporated

## SIXTY THIRD BOULÉ REGISTRATION

### Table of Contents

Greetings From the National President.....	3
Boulé Registration and Deadlines.....	4-5
Youth Meeting Registration.....	4-5
REGISTRATION INCLUDES.....	6
<b>Hotel Reservation/Cutoff</b> .....	<b>7</b>
<i>Hotel Online Reservation Link</i> .....	<i>7</i>
<i>Hotel Reservation Room Rates</i> .....	<i>7</i>
Transportation/Parking/Scooter/Wheelchair .....	8
Vendor Online Registration .....	9
Shipping and Receiving Policies .....	10
<b>Technology Section – Know Before You Go</b>	
<i>Gamma Phi Delta Sorority, Inc. Conference App Instructions</i> .....	<i>11</i>
<i>Mobile App Download &amp; Login Instructions</i> .....	<i>11</i>
<i>Slido &amp; Gamma Phi Delta Sorority, Incorporated Conference</i> .....	<i>12</i>
Boulé Agenda Highlights (Tentative) .....	13-14
National Youth Meeting Tentative Agenda .....	15



# Gamma Phi Delta Sorority, Incorporated

## SIXTY THIRD BOULÉ REGISTRATION

### *Greetings Sorors,*

I am pleased to personally invite you, on behalf of the National Board of Directors, to our 63rd Boulé in the Magic City . . . historic Birmingham, Alabama! Come and enjoy a wonderful time of sisterhood as we conduct the business of Gamma Phi Delta Sorority, Incorporated.

Sorors in **baby pink** and **baby blue** will converge on Birmingham in Gamma Phi Delta style with refinement and culture! The National Board of Directors is planning a meeting that will allow us to conduct the business of our sorority and allow time to greet our newest sorors and get reacquainted with those sorors we have met during our Gamma journey. The agenda will include reports, recommendations, updates on National initiatives and more.

Our agenda is included along with attire requirements. I hope that you will take advantage of the opportunity to mix and mingle with sorors outside of your chapter and region. The beauty of our sisterhood is our inclusiveness. True to our legacy, our sorority has blended a broad range of occupations as well as women of various business and professional backgrounds who make up our wonderful sorority. Together, we are a unique organization of accomplished business and professional women!

Come to Birmingham and share in a wonderful time of conducting Gamma Phi Delta business while bonding with sorors from the North, South, East, and West. I look forward to seeing and meeting you! See you in the Magic City of historic Birmingham!

IN SISTERHOOD,

*Lenor Reese*

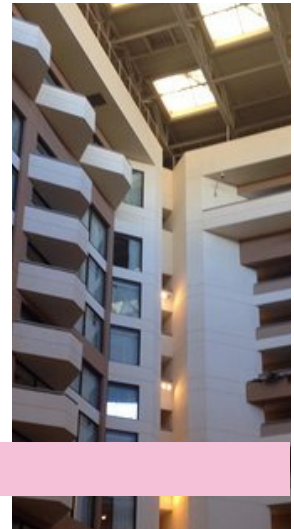
SUPREME BASILEUS





# Gamma Phi Delta Sorority, Incorporated

SIXTY THIRD BOULÉ REGISTRATION



SHERATON BIRMINGHAM HOTEL

## Members Registration

ONLINE REGISTRATION ONLY!

Registration Begins	2/24/2024
Life Membership Deadline	4/30/2024

Registration Ends  
**6/30/2024**

Hotel Registration  
CUTOFF DATE

**Before 6:00PM, Tuesday, July 9, 2024**



# Gamma Phi Delta Sorority, Incorporated

## SIXTY THIRD BOULÉ REGISTRATION

### Boulé Registration for Members

	Life Member	Graduate Member
Registration Fees	\$ 300.00	\$ 325.00

### Additional Tickets

Invited Guest	Wednesday Prayer Breakfast	Friday Community Luncheon	Saturday Gala
Additional Tickets	\$40.00	\$ 50.00	\$ 75.00

Online Registration only! Members will need user name and password to access MemberClicks. Acceptable forms of payment include: Visa, MasterCard, and Discover credit cards. **(NO PERSONAL CHECKS WILL BE ACCEPTED)**

#### REGISTRATION CANCELLATION POLICY:

1. If a registrant is unable to attend Boulé for any reason, they may substitute another member to attend in their place. The substitution must be in writing.
2. Cancellations on or before June 30, 2024 – refunds less a \$50.00 administrative fee.
- 3. After June 30, 2024 – No refunds!**
4. Cancellations must be emailed to the National Financial Grammateus no later than midnight June 30, 2024. The registration fee minus a \$50.00 processing fee will be refunded. Email: [natlfinssec@gpd1943.org](mailto:natlfinssec@gpd1943.org).
- 5. NO CANCELLATIONS WILL BE ACCEPTED AFTER June 30, 2024 for any reason.**

### National Youth Meeting Registration

	Life Members	Registration Fees
Regional Youth Advisors	\$250	\$325
Chapter Youth Advisors	\$250	\$325
Youth Auxiliaries Members	N/A	\$275

Please see the National Youth Meeting registration link under Quick Links on the National website.



# Gamma Phi Delta Sorority, Incorporated

SIXTY THIRD BOULÉ REGISTRATION



## YOUR 63RD BOULÉ

### Registration Includes:

- Conference bag, conference goodies
- One breakfast
- Two lunches
- One dinner
- Vendors: Buy the latest GPD paraphernalia for yourself or surprise chapter new and seasoned members with a gift!
- Opportunity to strengthen the bonds of sisterhood with sorors from across the country!



## HOSTED BY THE SOUTHERN REGION

### National Youth Meeting Registration Includes:

- Conference bag + conference goodies including National Youth Meeting T-shirt
- Two breakfasts
- Two lunches
- Youth Welcome Reception (*Wednesday evening*)
- Celebrate! (*Friday evening*)
- Admission to McWane Science Center (*Saturday*)



# Gamma Phi Delta Sorority, Incorporated

## SIXTY THIRD BOULÉ REGISTRATION

## Hotel Reservation/Cutoff

Reservations by attendees must be received on or before 6:00PM, Tuesday, July 9, 2024 (the "Cutoff Date"). At the Cutoff Date, Hotel will review the reservation pickup for the Event, release the unreserved rooms for general sale, and determine whether it can accept reservations based on a space-and rate available basis at the Gamma Phi Delta Sorority group rate after this date.

Reservations shall be made by using customized online reservation link: <https://book.passkey.com/event/50671724/owner/16607/home>

Room Type:	Room Rates:
Standard Double	\$170.00
Standard King	\$170.00

The above rates are available three days prior to and three days after the event (subject to availability). Members are responsible for charges including Room, All Applicable Taxes, and Incidentals. Hotel confirms the above group rates plus applicable taxes in effect at the time of check-in. Current state and local taxes are 17.5% plus \$3.00 per room night fee.

**ADDITIONAL OCCUPANCY CHARGE** - Room rates are based on single/double occupancy. Each additional person is \$25.00 per person plus applicable taxes.

**DEPOSIT FOR GUESTROOMS** - All reservations must be guaranteed with a first-night room deposit or guaranteed with a major credit card. The hotel will not hold any reservation without one of the listed methods. Each guest must provide a valid credit card upon check-in.

Any guest who checks out before the guest's reserved check out date will have an early departure fee charged to their account. To avoid this fee, guests must advise at or before check-in of any changes to the length of stay.

**NO ROOM TRANSFER BY GUEST CHECK IN/CHECK OUT: A member may not transfer room to another member or other hotel guest.**



# Gamma Phi Delta Sorority, Incorporated

## SIXTY THIRD BOULÉ REGISTRATION

## Parking/Transportation/Scooters/Wheelchairs

### **PARKING:**

Valet: \$38.00 Daily (plus tax) \*\*All rates are subject to change without notice.

### **TRANSPORTATION:**

Transportation arrangements to and from the airport will be provided soon.

### **BAGGAGE SERVICE:**

Guests arriving individually are greeted at the front door and assisted with their luggage.

### **SCOOTER AND WHEELCHAIR SERVICE:**

For your convenience, below are companies for scooter and wheelchair rentals. Please contact them directly to rent a scooter or wheelchair and make arrangements for delivery.

---

#### *Scooter Rentals:*

##### **Elrod Mobility**

[www.myelrodmobility.com](http://www.myelrodmobility.com)

##### **Mobility Central, Inc.**

[www.mobilitycentralinc.com](http://www.mobilitycentralinc.com)

##### **Scot Around**

[www.scootaround.com/en](http://www.scootaround.com/en)

#### *Wheelchair Rentals:*

##### **Durable Medical Equipment (DME)**

Contact: Brandy Beverly

[www.durablemedicalequipment.net](http://www.durablemedicalequipment.net)

[Brandy@ durablemedicalequipment.net](mailto:Brandy@ durablemedicalequipment.net)

205.591.4792

##### **NARE Home Medical Equipment**

[www.narehomemedical.com](http://www.narehomemedical.com)

205-226-8004

##### **Medical Equipment Outfitters**

[www.mobilitycentralinc.com](http://www.mobilitycentralinc.com)

205-916-0670







# Gamma Phi Delta Sorority, Incorporated

## SIXTY THIRD BOULÉ REGISTRATION

### Vendors:

*Only Online registration is allowed.*

The Usage Fee will be \$250.00 for sorority members and \$300.00 for non-sorority members and outside vendors. Vendor items to be stored in our secured area, next to registration, at the end of the day. The cancellation date is July 1, 2024

**Vendors Registration is online at [www.gpd1943.org](http://www.gpd1943.org)**

**Wednesday, July 31, 2024 – Friday, August 2, 2024**

**MOVE IN (Opening)**

Location: Space identified on site Time: 8:00 a.m. – 11:00 p.m.

**SATURDAY August, 3, 2024 DISMANTLE/CLOSE**

Location: Space identified on site Time: 8:00 a.m. – 6:00 p.m.





## Shipping and Receiving Policies

The hotel is pleased to accept and store all boxes and shipments required for scheduled meetings and programs according to the following policies: All boxes must be labeled with group name, date of program, group on-site contact as well as the event manager in charge of your meeting/group. The hotel will not assume any responsibility for the damage or loss of any merchandise or articles left or sent into the hotel prior to, during, or following your function. The hotel cannot assume responsibility for storage of boxes received more than three (3) days prior to the schedule meeting/program. After your event, any boxes to be shipped out of the hotel must be properly packaged and labeled with shipping address, return address, and method of payment using the proper shipping label for your preferred shipper (ex: UPS, FedEx, other). The hotel is not responsible for packing or supplying any packing material. Package handling fees vary from \$6 and up for all incoming packages. Outgoing packages will be charged a handling fee of \$6 per package, no matter the size. Any materials left behind without shipping instructions will be discarded after three (3) business days.

### Incoming package rates are as follows and listed per package:

- 0-25 lbs = \$6.00
- 26-50 lbs = \$10.00
- Over 50 lbs = \$20.00
- Crate = \$75.00
- Pallet = \$100.00

0-5	\$5.00 each	Storage is charged as follows after the third business day, (not including Saturday or Sunday)	
6-20	\$10.00 each	0-50 lbs	\$5.00 each per day
21-50	\$15.00 each	Over 50 lbs	\$7.00 each per day
Over 50lbs.	\$25.00 each	Crates	\$10.00 each per day
Crates	\$50.00 each	Palettes	\$15.00 each per day
Pallets	\$75.00 each		



# Gamma Phi Delta Sorority, Incorporated

## SIXTY THIRD BOULÉ REGISTRATION

## Technology Section

### Gamma Phi Delta Sorority, Inc. Conference App Instructions Mobile App Download & Login Instructions

Please Note: Apple and Android Device need to have the last software version on the phone



APPLE STORE (APPLE)

- Search for “[Gamma Phi Delta Sorority, Inc. ]”
  - You can also [click here](#)
- You should see “[Gamma Phi Delta Sorority, Inc. ]” in the results
- Click on ‘GET’
- Download the app to your phone
- Open the app
- Scroll to the bottom and click “Login”
- Follow the prompts on the screen to obtain an access code
  - **Make sure to use the email you registered with**
  - **Enter the access code sent to your email**
- You should now have access to the event



GOOGLE PLAY STORE  
(ANDROID)

- Search for “[Gamma Phi Delta Sorority, Inc.]”
  - You can also [click here](#)
- You should see “[Gamma Phi Delta Sorority, Inc. ]” in the results
  - If the app does not appear in the search results, use quotes around the app name
- Click on ‘Install’
- Download the app to your phone
- Click on ‘open’
- Scroll to the bottom and click “Login”
  - Follow the prompts on the screen to obtain an access code
    - **Make sure to use the email you registered with**
  - **Enter the access code sent to your email**
- You should now have access to the event

Note: Android version is 5.1 or later is required to run the app



# Gamma Phi Delta Sorority, Incorporated

SIXTY THIRD BOULÉ REGISTRATION

## Slido & Gamma Phi Delta Sorority, Incorporated Conference

### **Applications know before you go:**

1. In order to vote (life members or delegates) during the conference you will need to download the Slido app to your phone or tablet.
2. Download the GPD app (instructions attached), all presenter information, updates, presentations, PowerPoint slides, agenda or schedule changes will occur here. Make sure you download the app to check-in/check-out of sessions and remain abreast to any schedule changes that may occur during the conference. In addition, this is required to receive a certificate of attendance for this meeting.

If you need help or have questions regarding the above steps please contact the technology team via email or phone prior to the conference to be sure you are conference ready! Again, we look forward to seeing you in the coming weeks!

### **Election Runner**

#### *Election Runner Information*

Hello Sorors!

Exciting news – it's voting time for our election! Here's a friendly and simple guide on how to cast your vote using Election Runner.

Look for the Election Email: Check your inbox for an email from Election Runner. This email is your ticket to the voting process.

Your Email is Your Key: Good news! Your email address is all you need to log in and vote. No need to remember any extra codes or keys.

Visit the Voting Site: Click the link in the email to head over to the voting page. If there's no link, no problem! Just go to the Election Runner website and look for the voting Log In with Your Email: Once you're on the voting page, simply enter your email address in the login section.



# Gamma Phi Delta Sorority, Incorporated

SIXTY THIRD BOULÉ REGISTRATION

## Boulé Agenda Highlights

(TENTATIVE)

### Tuesday, July 30, 2024

3:00 p.m. – 5:00 p.m.	National Board of Directors and Committee Meetings
6:00 p.m. – 9:00 p.m.	Registration

### Wednesday, July 31, 2024 – Candidates Forum

Attire: Sorority colors – Business Attire “NO pants allowed.” GPD Blazers with our shield may be worn. Flat shoes are allowed. (NO GPD paraphernalia allowed including line jackets, baseball caps, etc. NO wearing of casual/athletic shoes, slippers, flip flops or similar footwear allowed.)

7:00 a.m. – 8:00 a.m.	Registration
8:00 a.m. – 6:00 p.m.	Vendors Open!
8:00 a.m. – 9:00 a.m.	Prayer Breakfast (open)
9:30 a.m. – 10:00 a.m.	Official Opening
10:00 a.m. – 5:00 p.m.	General Session I
7:00 p.m. – 8:00 p.m.	Candidates Forum

### Thursday, August 1, 2024 – Voting

Attire: Sorority colors – Business Attire. GPD Blazers with our shield may be worn. Flat shoes are allowed. (NO GPD paraphernalia allowed including line jackets, baseball caps, etc. NO wearing of casual/athletic shoes, slippers, flip flops or similar footwear allowed.)

7:15 a.m. – 8:30 a.m.	Voting
8:00 a.m.	Vendors Open!
8:30 a.m. – 11:30 a.m.	General Session II (continued)
11:45 a.m. – 1:00 p.m.	Community Recognition Luncheon
1:15 p.m. – 5:00 p.m.	General Session II (continued)



# Gamma Phi Delta Sorority, Incorporated

## SIXTY THIRD BOULÉ REGISTRATION

## Boulé Agenda Highlights (TENTATIVE)

### Friday, August 2, 2024 – Run-off Election (if required)

Attire: Memorial Service: Simple uninterrupted black dress or suit with sleeves. Where a suit is worn, a black shirt or blouse is permitted when necessary. The dress or suit may have black buttons or black zipper. Any other accent, e.g., sequins, studs, etc. must also be black. NO PANTS Black closed toe shoes with black hosiery. Short, single strand necklace of small white pearls and small white pearl earrings. Short white gloves. Small black hat. Sandals are not permitted.

Attire: Sorority colors – Business Attire. GPD Blazers with our shield may be worn. Flat shoes are allowed. (NO GPD paraphernalia allowed including line jackets, baseball caps, etc. NO wearing of casual/athletic shoes, slippers, flip flops or similar footwear allowed.)

7:15 a.m. – 8:30 a.m.	Run-off Election (if required)
8:00 a.m.	Vendors Open!
8:00 a.m. – 11:30 a.m.	General Session III Memorial Service, Soror Kartessa Bell, Chair
12:00 Noon – 1:30 p.m.	Membership & Recognition Luncheon
1:45 p.m. – 5:00 p.m.	General Session III (continued)

### Saturday, August 3, 2024

Attire: Sorority colors – Business Attire. GPD Blazers with our shield may be worn. Flat shoes are allowed. (NO GPD paraphernalia allowed including line jackets, baseball caps, etc. NO wearing of casual/athletic shoes, slippers, flip flops or similar footwear allowed.)

8:00 a.m.	Vendors Open
8:30 a.m. – 12:00 p.m.	General Session IV
12:00 p.m.	Induction of Officers
12:30 p.m.	Official Closing
1:30 p.m.	Tour of Birmingham/Free Time
7:00 p.m. – 10:00 p.m.	Gala (Attire: Sorority colors, Black tie/After 5)



# Gamma Phi Delta Sorority, Incorporated

SIXTY THIRD BOULÉ REGISTRATION



## National Youth Meeting (TENTATIVE AGENDA)

### Wednesday, July 31, 2024

- Meeting with Regional and Chapter Youth Advisors
- Youth Registration/Check-In
- Youth Orientation and Welcome Reception

### Thursday, August 1, 2024

- Official Opening
- Breakfast
- Youth Special Presentation to Gamma Phi Delta Boulé Body
- Lunch
- Voting of Officers
- Talent Show Rehearsal and Talent Show

### Friday, August 2, 2024

- Breakfast
- Voting for Awards
- Workshops
- Lunch
- Fantasy Swirl rehearsal/Fantasy Swirl Ball
- Closing Celebration

### Saturday, August 3, 2024

- Breakfast (on your own)
- McWane Science Center
- Lunch (on your own)





PROUDLY CELEBRATING 81 YEARS OF SISTERHOOD



# 63rd *Boulé*

*"One Sisterhood, Remembering Our Legacy...Building for the Future"*

*Lenor Reese, Supreme Basileus*

**JULY 30 – AUGUST 3, 2024**

**SHERATON BIRMINGHAM HOTEL**

2101 Richard Arrington Jr. Boulevard

Birmingham, Alabama 35203

TN: (205) 324-5000

**Gamma Phi Delta Sorority, Incorporated a Business and Professional Women's Sorority is a 501(c)(3) Organization.**

National Headquarters: 2657 West Grand Boulevard, Detroit, Michigan 48208-1203

Phone: (313) 873-2691 | E-mail: [gamma\\_phi\\_delta@gpd1943.org](mailto:gamma_phi_delta@gpd1943.org) | Website: [gpd1943.org](http://gpd1943.org)

*National Theme: "Uniquely Joined in Purpose, United in Service, Champions of Change"*



ESTABLISHED IN NINETEEN FORTY THREE

